



PRECURE[®]

*Helps prevent work-related
musculoskeletal disorders*

Finn Bech Andersen
fba@precure.dk

+45 53558217

Bryggeristræde 2
3770 Allinge, Denmark
CVR 38174010



Meet Helena

Due to chronic tennis elbow and 6 years of pain, Helene had to change job and only work reduced hours. Not to mention the personal consequences. The core to our idea and vision stems from Helene's case.

Due to chronic tennis elbow and 6 years of pain

Musculoskeletal disorders is the number one work-related health problem in the world

Musculoskeletal disorders (MSD) are injuries and disorders that affect the human body's movement or musculoskeletal system. Tennis elbow and lower back problem are examples hereof.



58%

of all workers in the EU report MSD complaints



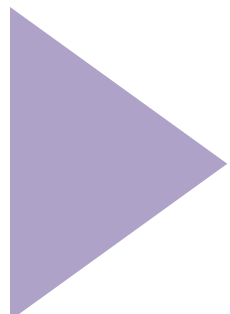
39 billion

Employer costs in EU is estimated to €39 billion

We digitalize health and safety to help prevent work-related MSD

Save costs

Healthier workplace



Dashboard provide new insights

PRECURE's platform is on the market and will be expanded



Smart wearables collect data



App gives user feedback



We focus on enterprise customers



We offer an all-inclusive subscription

Devices

€200 per device per month

€60,000 per pilot

**Software
and
support**

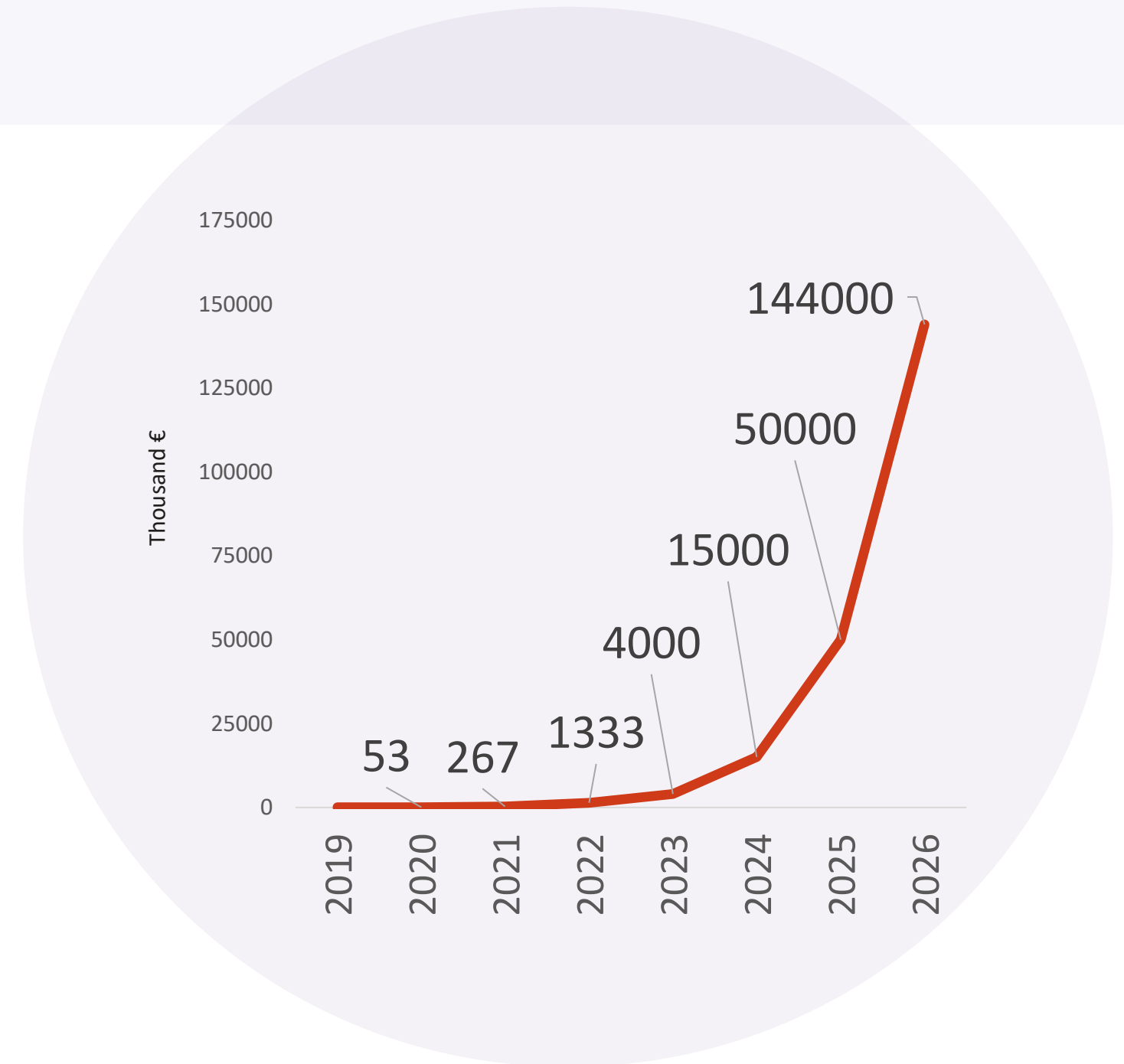
**Unlimited use
and data**

- Risk mapping
- Rehabilitation
- Design workflow
- Automation
- Quality Control
- Annual Workplace assessment
- Training



We are generating revenue and target 2% of the addressable market in 5 years


Market size
€7.2 billion

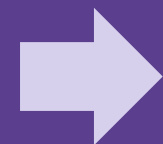



What effect do we see?

99% 
Willingness to wear




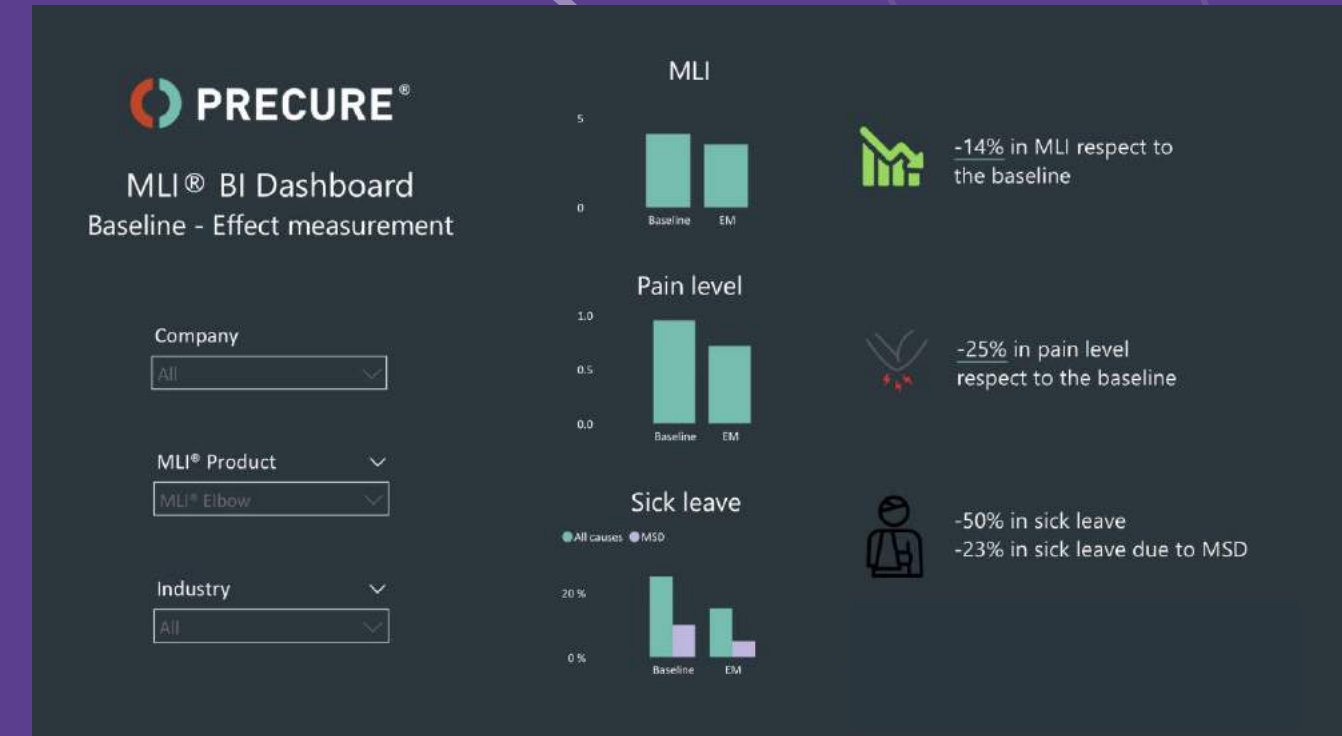
14% 
Critical strain reduction



25% 
Pain reduction




23% 
Sick leave reduction



An amazing and diverse team united in our vision



David, data master
MSc Engineering
Drone pilot 


Søren, CINO
HSE expert, 25 yrs. exp.
serial entrepreneur 



Finn, CEO
MBA, +20 yrs
int. mgmt. exp. 

Petra, COO
MSc Health Innovation
Chief 



Jønne, CTO
MSc Engineering
Go-cart 

The competitor landscape

Key differentiators:

- ✓ Data precision
- ✓ Prevention
- ✓ Individual and organizational
- ✓ Ease-of-use

Primary competitors with similar business model and/or value proposition

Secondary competitors with similar technologies

Parameter	PRECURE (DK)	Bioservo (SE)	Somaxis (US)	Hinge Health (US)	Expain (NO)	Shimmer (IRE)	Dorsavi (US)	Athos (US)	Dycare (ES)	UpRight (ISR)	Cometa (IT)	Delsys (US)	Kinetic (US)	Myontec (FI)	Soter Analytics (UK)	Modjoul (US)	WearHealth UG (DE)
Company insights	+	+	-	-	-	+	+	-	+	-	+	+	+	+	+	+	+
Individual feedback	+	+	+	+	+	-	-	+	-	+	-	-	+	+	+	+	-
Ease-of-use	+	-	+	+	+	-	-	+	-	+	-	-	+	+	+	+	+



Where are we today?

€ € 2.5 million in funding

⚡ MLI[®] Elbow on the market and MLI[®] Back as prototype

+ +1000 users, 50 companies, and +18 billion data points

3 3 partners – one being the top-1 Scandinavian insurer

DK Revenue in DK, initial activities in the US

2 Two patents pending



PRECURE[®]

*Helps prevent work-related
musculoskeletal disorders*

Finn Bech Andersen
fba@precure.dk

+45 53558217

Bryggeristræde 2
3770 Allinge, Denmark
CVR 38174010

Appendixes

The business case for the customer

	Variables	Calculated
Average number of sick days per employees per year *	8	
The average percentage of sick days related to MSD **	33%	2,64
The MLI® platform addresses 70% of MSD-related sick days **		1,85
Average employee monthly salary	\$ 3.846	
Direct costs per sick day *		\$ 262
Indirect cost are 1 to 5 times bigger or in average ***	1,5	\$ 392
Average costs per sick day		\$ 654
Average costs for MSD-related sick days covered by the MLI® platform per employee per year		\$ 1.208
Effect of the MLI® platform in reduced MSD-related sick days	10%	\$ 121
Number of employees	100.000	
Normal cost of MSD-related sick days per year		\$ 12.083.077
PRECURE subscription. In your case, we recommend:	400 MLI® Back 200 MLI® Elbow 200 MLI® Shoulder	
Subscription cost per year		\$ 2.584.615
ROI		368%
Savings		\$ 9.498.462

* Sick leave - more and faster back to work, 2019, © Dansk Arbejdsgiverforening

** Health and safety at work in Europe – A statistical portrait, Inna Šteinbuka, Anne Clemenceau, Bart De Norre, 2010, Eurostat.

*** Work-related musculoskeletal disorders: Prevention report, 2008, EU-OSHA – European Agency for Safety and Health at Work

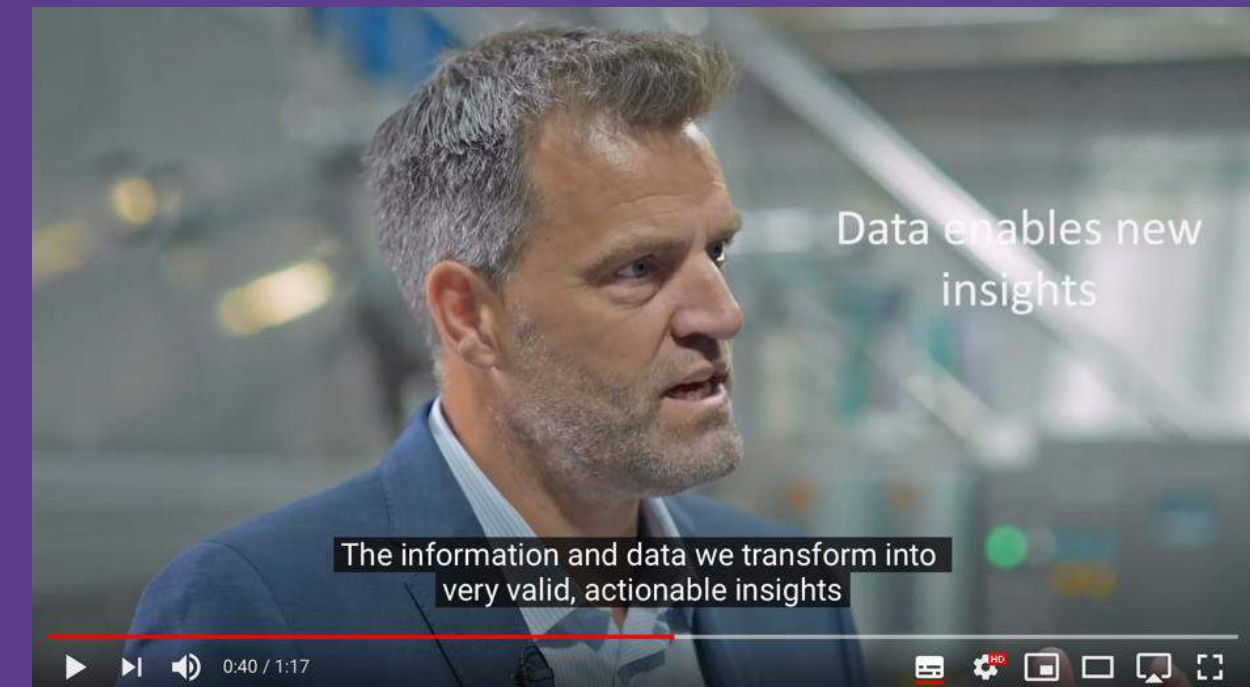
Click on pictures to see how it works

Individual use



<https://youtu.be/c4DRxEPFN1Y>

WHS insights



<https://youtu.be/-eccgkOwU3o>

Curios about Helene?



Watch this video on how MLI® Elbow made all the difference for her. For the first time in 6 years, she is experiencing less pain.

This how the platform works



MLI® Elbow



MLI® Back



MLI® Shoulder

Available 2023



B WHS Insights

Use MLI® smart wearables to collect data on a group of employees. Use MLI® BI Dashboard to analyze the data and create new insight; on whether there is an issue, with MSD, what it is, and what to do about it. You can do this by function, process, team, or a whole department. – and when ever you want

Structural and organizational factors



C Individual use

Distribute MLI® smart wearable to employees, who already experience MSD or are at risk. It provides the user feedback, which nudges the user to change inexpedient behaviour and thus help prevent MSD and support rehabilitation

Individual factors

D MLI® Smart wearables

Sensors collect muscle and movement data. PRECURE expands the portfolio to parts of the body exposed to work-related MSD.

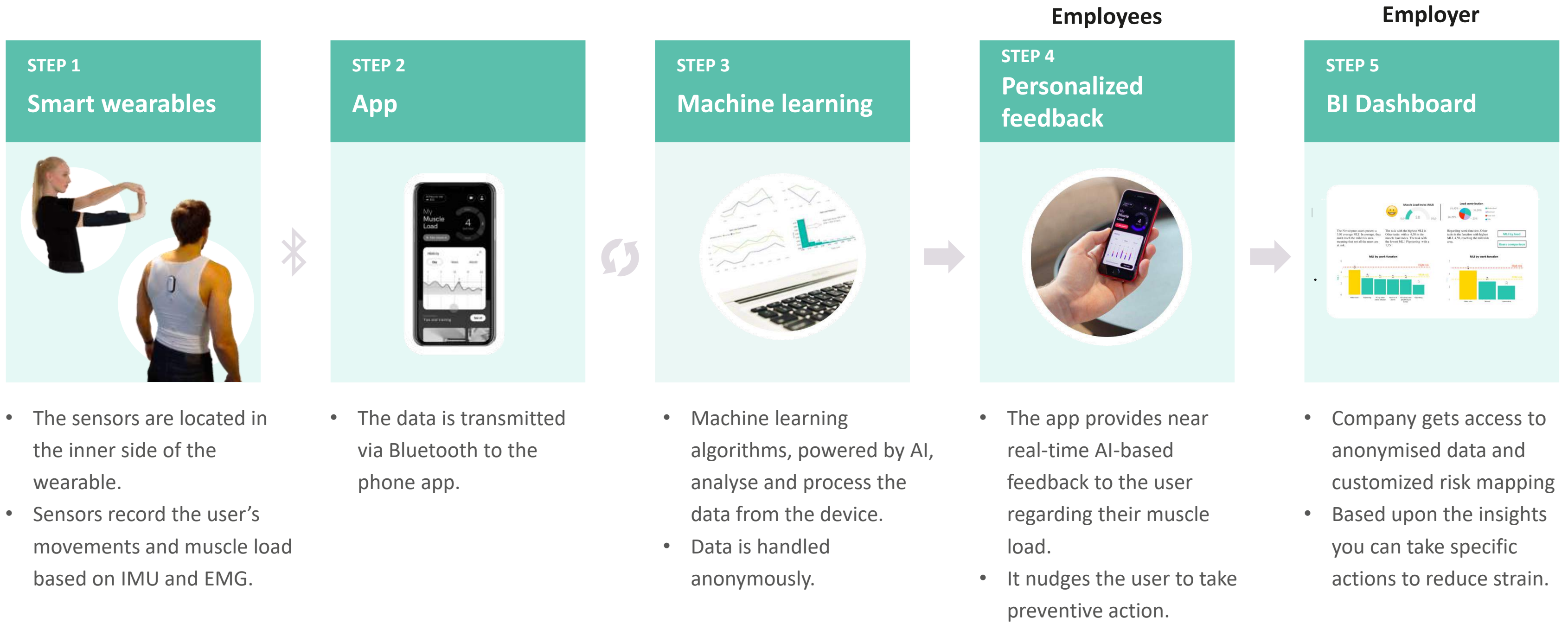


A MLI® BI Dashboard

Use MLI® smart wearables to collect data on a group of employees. Use MLI® BI Dashboard to analyze the data and create new insight; on whether there is an issue, with MSD, what it is, and what to do about it. You can do this by function, process, team, or a whole department. – and when ever you want



How our platform works



- The sensors are located in the inner side of the wearable.
- Sensors record the user's movements and muscle load based on IMU and EMG.

- The data is transmitted via Bluetooth to the phone app.

- Machine learning algorithms, powered by AI, analyse and process the data from the device.
- Data is handled anonymously.

- The app provides near real-time AI-based feedback to the user regarding their muscle load.
- It nudges the user to take preventive action.

- Company gets access to anonymised data and customized risk mapping
- Based upon the insights you can take specific actions to reduce strain.

Real-time muscle activity → Joint movement monitoring → Early warning → Behavioural change → Prevention of injury → Reduced costs

Design intent

UX criteria

- Trustworthy
- Intuitive and user-friendly
- Non-obstructive and Gender neutral
- Comfortable



MLI® Elbow

2019



MVP of MLI® Back

2021



2021

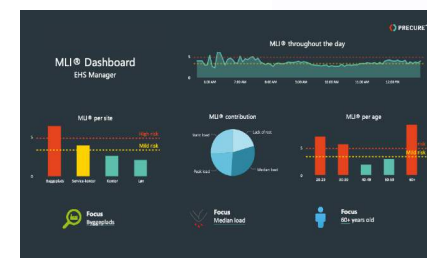


MLI® Back

2022



MLI® BI Dashboard



MLI® app



MLI® Back, design intent



Looking for € 3M

Split into two:

\$ 1M early 2022

\$ 2M early 2023

Growth in existing markets

- Expansion of team
- Establishing footprint in the USA

Expansion to new markets

- Expand into EU countries and USA
- Initial activities in the Japanese market

Product portfolio

- Digitalization of the subscription service delivery model
- Reduce CoP
- Upgrades and new products

